

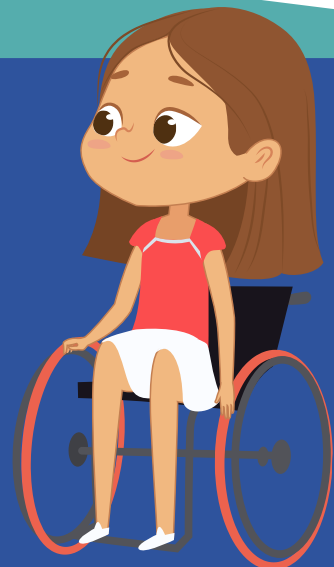
NO LIMITS SUMMER CAMP

We offer fun for children and young adults ages 6-21 with developmental disabilities.

This experience provides a wide variety of activities designed to promote the educational and recreational interests of each camper.



- ✓ Registration open Feb 13, 2023 - March 22, 2023
- ✓ Session 1: June 5 - 30, 2023
- ✓ Session 2: July 10- August 4, 2023
- ✓ Early registration deadline for both sessions is Wednesday, March 22nd
- ✓ Each session will run Monday - Friday from 9am to 3pm



For more information, contact Amy or Liz at 417-864-7887. Email inquiries may be sent to aholland@thearcoftheoarks.org or ldressler@thearcoftheoarks.org.
Learn more online at thearcoftheoarks.org.

CAMP GOALS

- ✓ To provide a fun and safe experience
- ✓ Opportunities for each individual to participate in all activities and community outings sponsored by the camp
- ✓ Opportunities to make new friends and catch up with old ones
- ✓ To provide qualified staff to supervise your child's day camp experience

CAMP ACTIVITIES

- ✓ Weekly Themes
- ✓ Swimming
- ✓ Sports
- ✓ Arts & Crafts
- ✓ Daily Field Trips
- ✓ Music
- ✓ Games & More!



COST

The cost of camp for Greene County residents will be determined on a sliding scale fee. The maximum cost per camper in all counties is \$60 per week or \$240 per session. Additional Scholarships may be available for surrounding counties.

Annual Household Income						
2 People	\$0-\$14,999	\$15,000-\$19,999	\$20,000-\$24,999	\$25,000-\$29,999	\$30,000 - \$70,000	\$70,000+
3 people	\$0 - \$17,999	\$18,000 - \$22,999	\$23,000 - \$27,999	\$28,000 - \$32,999	\$33,000 - \$70,000	\$70,000+
4 people	\$0 - \$20,999	\$21,000 - \$25,999	\$26,000 - \$30,999	\$31,000 - \$35,999	\$36,000 - \$70,000	\$70,000+
5 people	\$0 - \$23,999	\$24,000 - \$28,999	\$29,000 - \$33,999	\$34,000 - \$38,999	\$39,000 - \$70,000	\$70,000+
6 people or more	\$0 - \$26,999	\$27,000 - \$31,999	\$32,000 - \$36,999	\$37,000 - \$41,999	\$42,000 - \$70,000	\$70,000+
Family Weekly Payment						
	\$10.00	\$20.00	\$30.00	\$40.00	\$50.00	\$60.00

Space is limited. The selection of participants will be made based on funding, order of application, and best fit for our programs and activities.